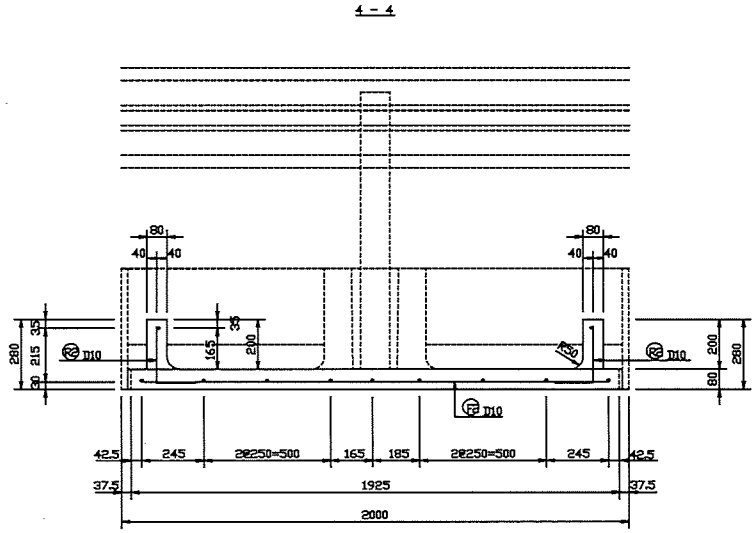
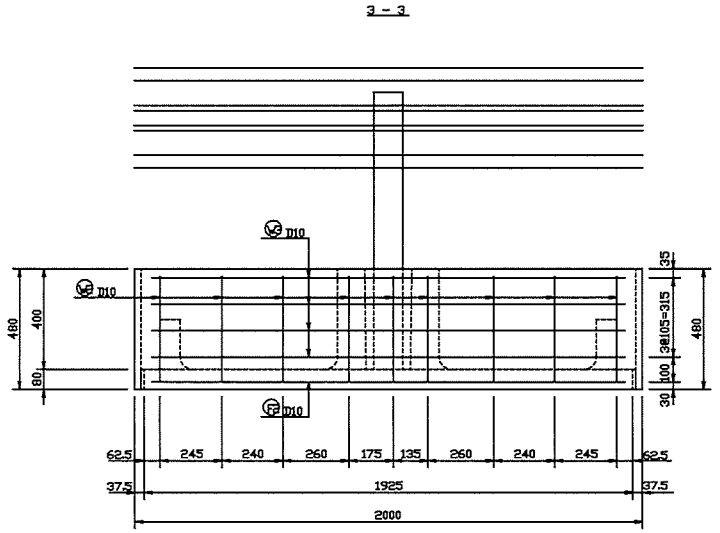
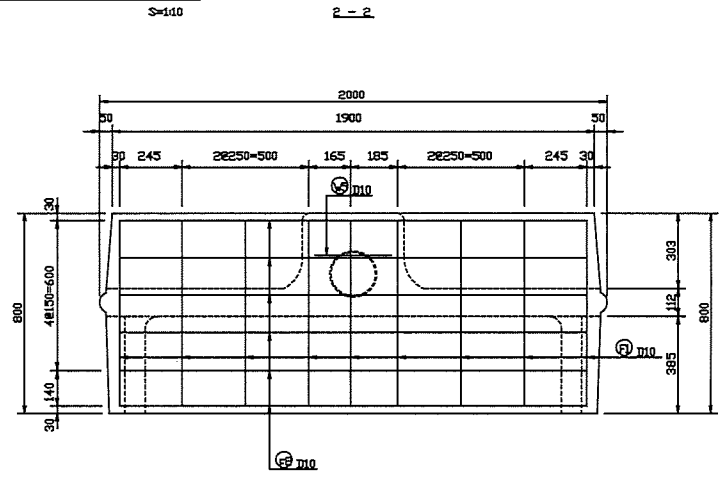
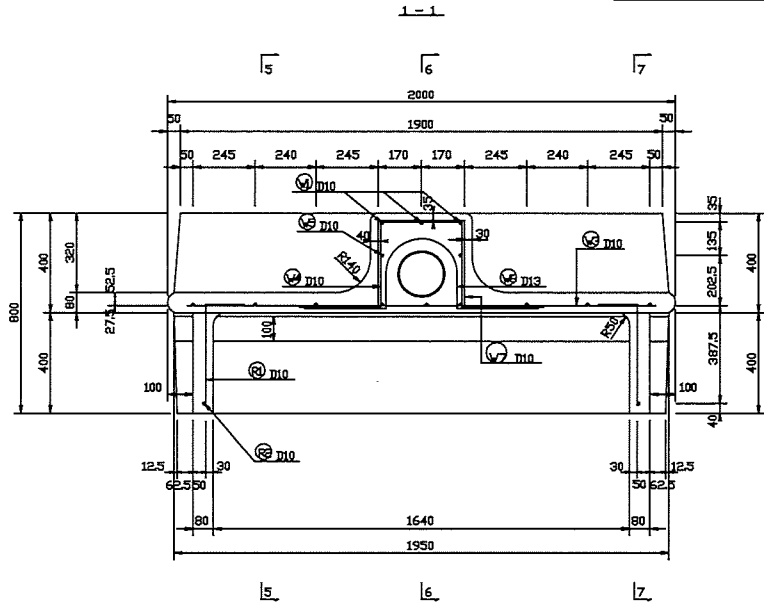


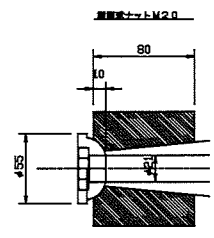
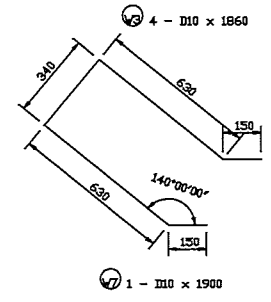
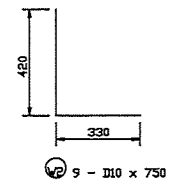
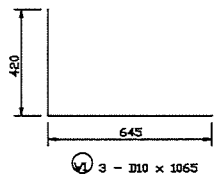
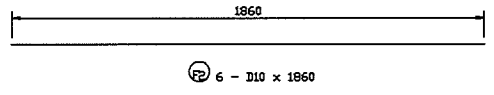
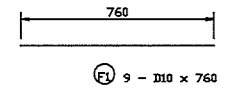
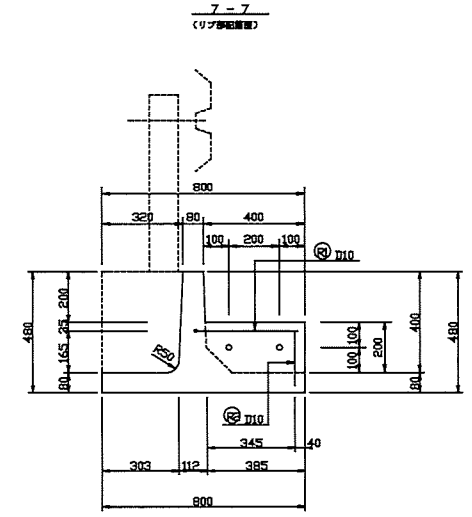
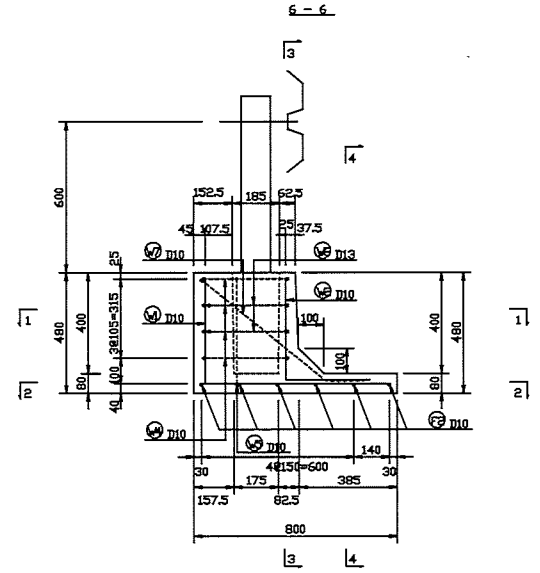
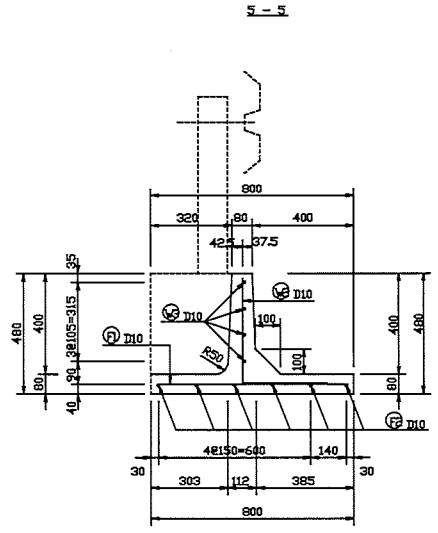
プレキャストガードレール基礎配筋図 (モノ) PG II

S=110

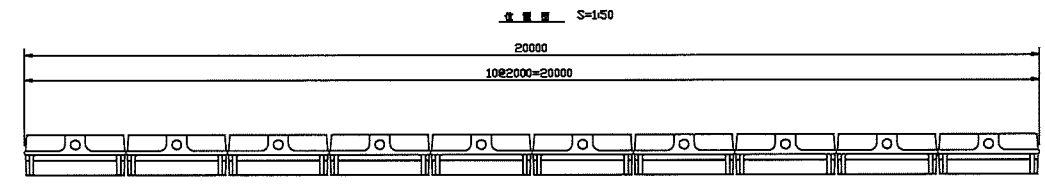
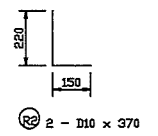
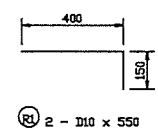
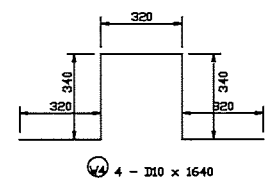
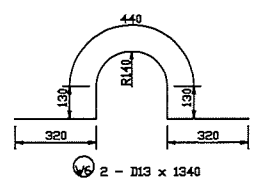
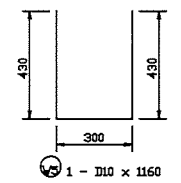


プレキャストガードレール基礎配筋図 (その2) PG II

S=140



S=12



鉄筋量表 (SD295)

筋種	径	長さ	本数	単位重量	一次量(kg)	実量	備註	
F 1	D10	760	9	0.58	0.43	4	—	
F 2	D10	1860	6	0.58	1.04	6	—	
							10	
R 1	D10	550	2	0.58	0.31	1	┘	
R 2	D10	370	2	0.58	0.21	1	└	
							2	
V 1	D10	1065	3	0.58	0.80	2	┘	
V 2	D10	750	9	0.58	0.42	4	└	
V 3	D10	1860	4	0.58	1.04	4	┘	
V 4	D10	1860	4	0.58	0.82	4	┘	
V 5	D10	1160	1	0.58	0.85	1	┘	
V 6	D13	1340	2	0.925	1.33	3	┘	
V 7	D10	1800	1	0.58	1.05	1	┘	
							19	
合計 D13				3kg				
D10				26kg				
総重量				31kg				

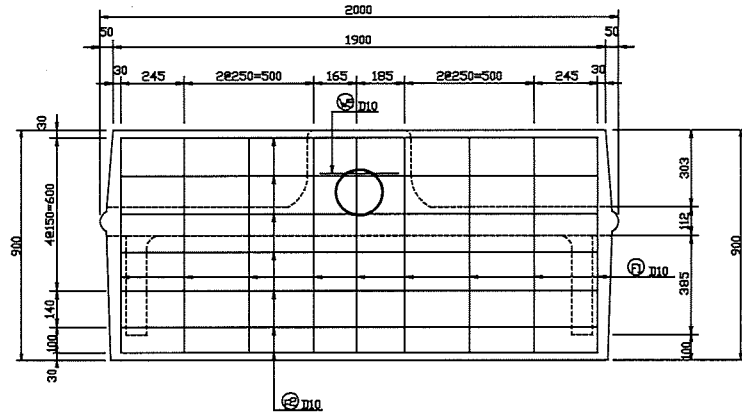
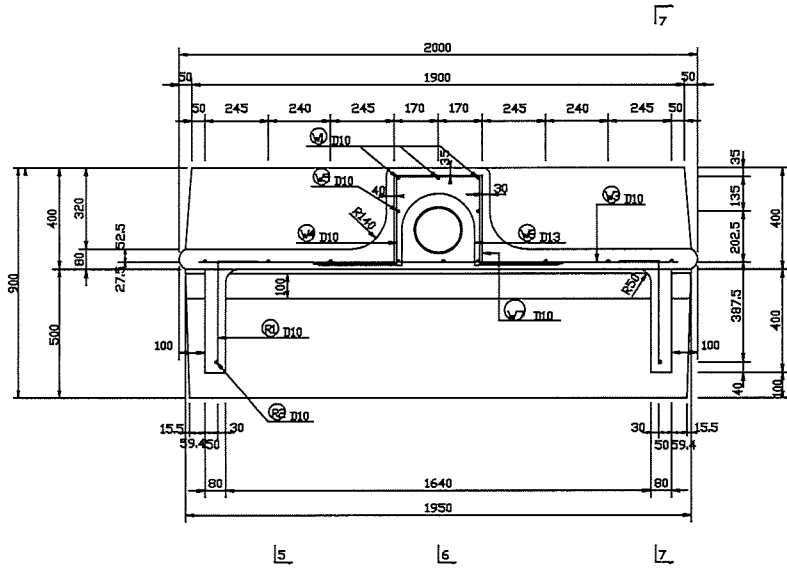
S=140

プレキャストガードレール基礎配筋図(モノ)PG I

1-1

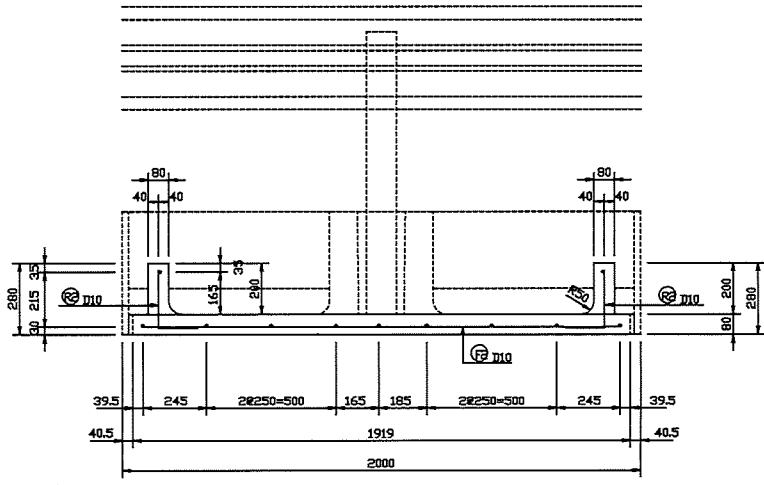
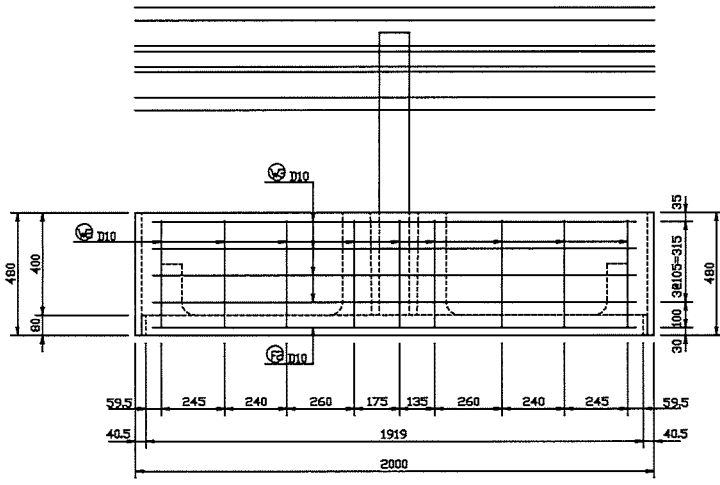
S=140

2-2



3-3

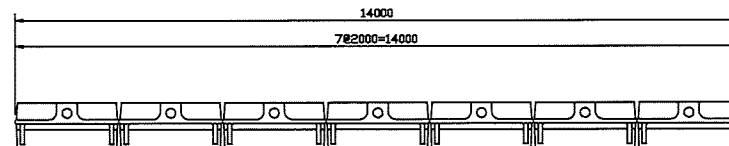
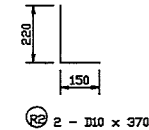
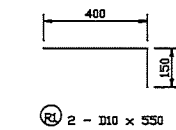
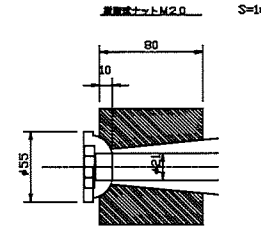
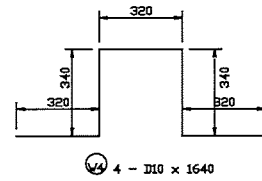
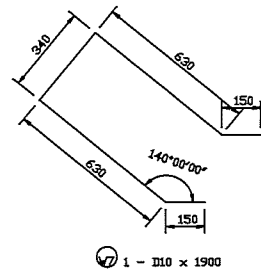
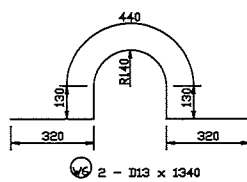
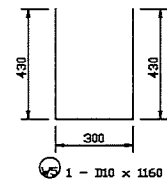
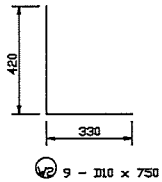
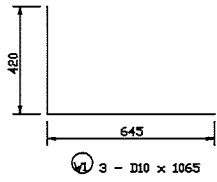
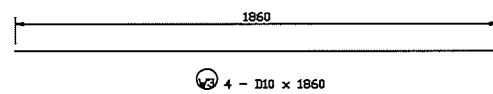
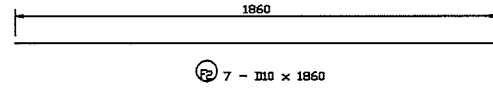
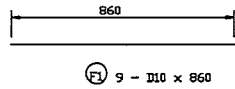
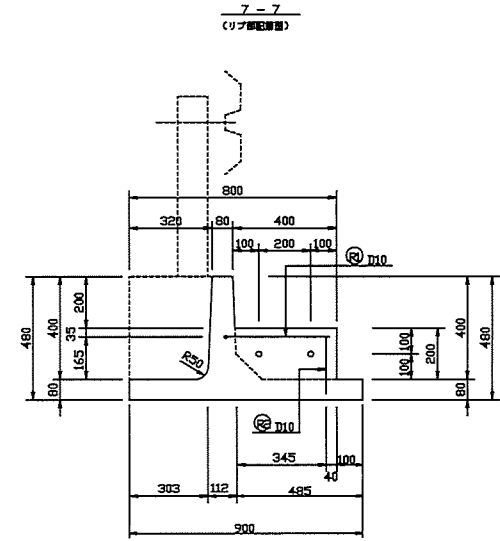
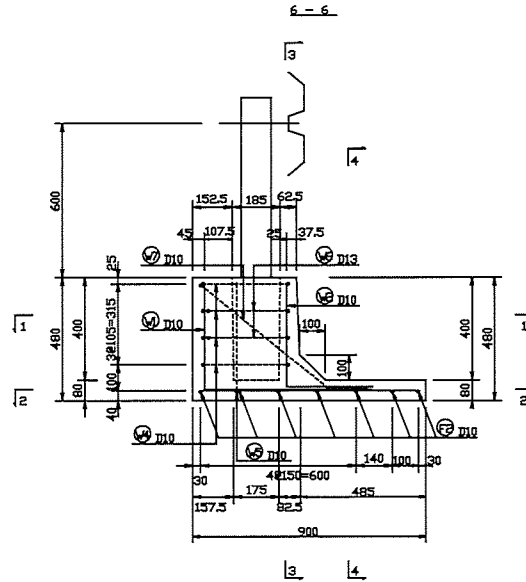
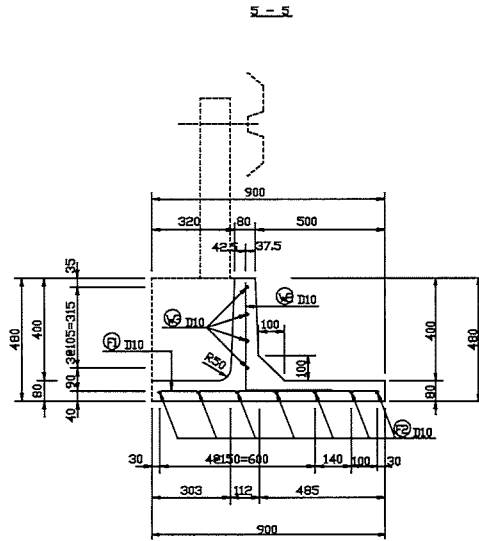
4-4



⑤-⑧-BC-2

プレキャストガードレール基礎配筋図(その2) PG II

S=100



鉄筋質量表 (SD295)

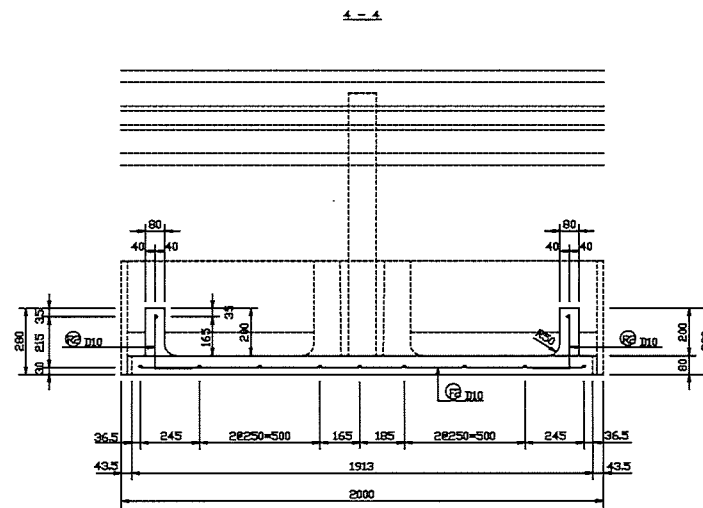
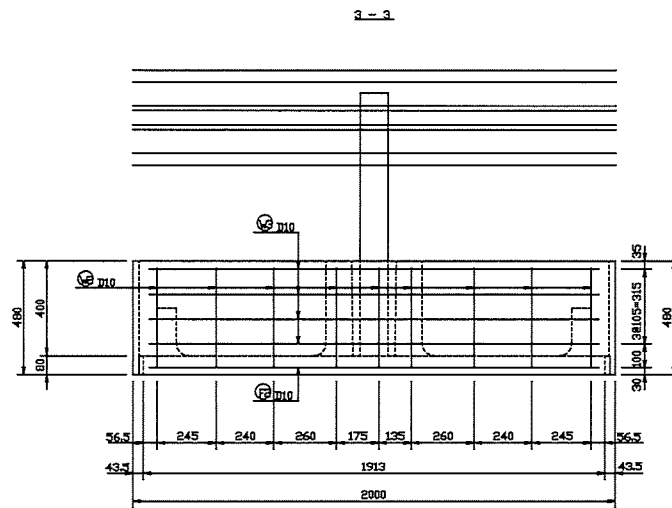
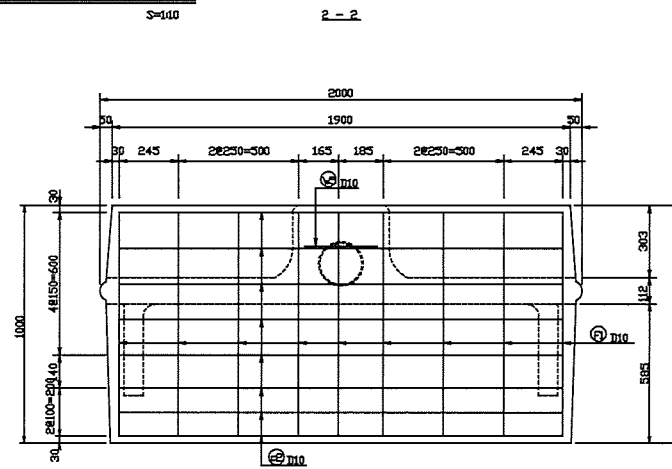
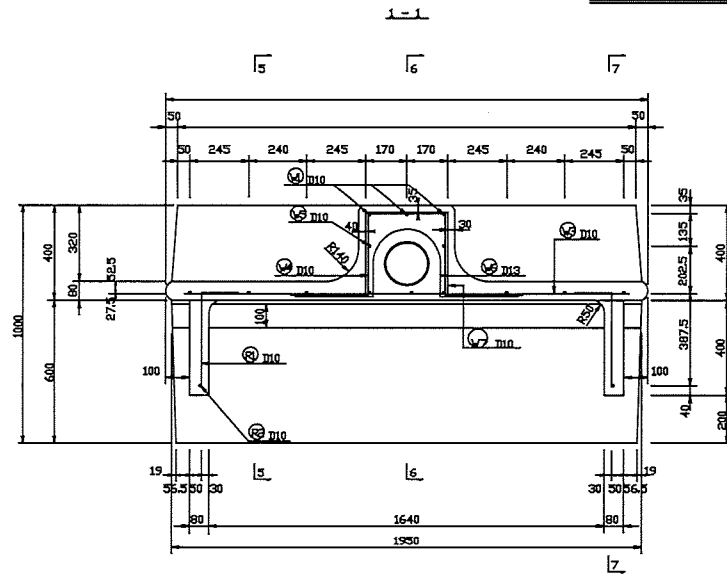
種別	径	長さ	本数	単位重量	一次重量	質量	概要
F 1	D10	860	9	0.58	0.48	4	—
F 2	D10	1860	7	0.58	1.04	7	—
							11
R 1	D10	550	2	0.58	0.31	1	┌
R 2	D10	370	2	0.58	0.21	1	L
							2
V 1	D10	1065	3	0.58	0.85	2	L
V 2	D10	750	9	0.58	0.42	4	L
V 3	D10	1060	4	0.58	1.04	4	—
V 4	D10	1040	4	0.58	0.92	4	┌
V 5	D10	1160	1	0.58	0.85	1	┌
V 6	D13	1340	2	0.995	1.99	3	┌
V 7	D10	1900	1	0.58	1.08	1	┌
							19
合計 D13				3kg			
D10				29kg			
総質量				32kg			

寸法表 S=150

製品番号 BC-900

⑧-⑧-BC-3

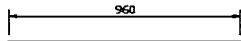
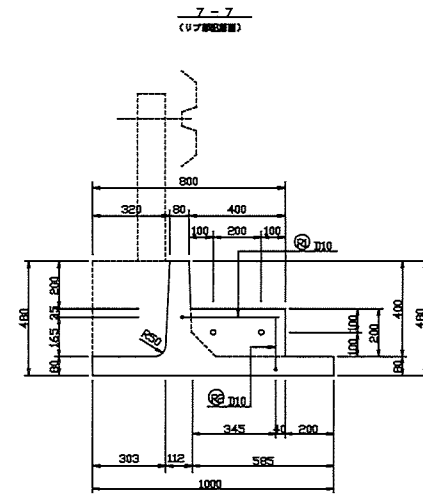
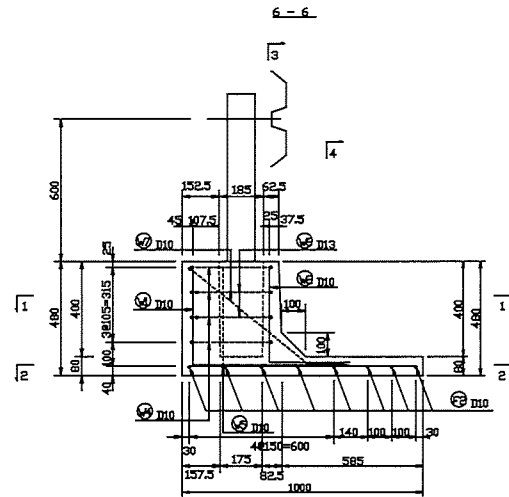
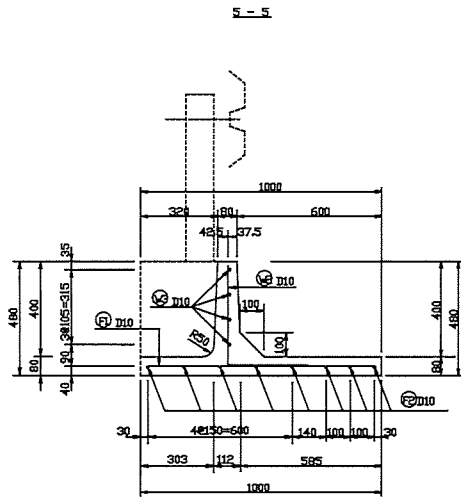
プレキャストガードレール基礎配筋図 (その1) PG II



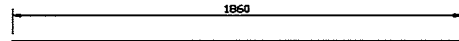
製品番号	BC-1000
------	---------

プレキャストガードレール基礎配筋図(その2) PG II

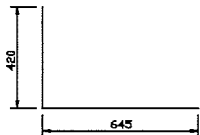
S=100



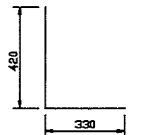
⑨ 9 - D10 x 960



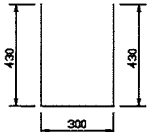
⑧ 8 - D10 x 1860



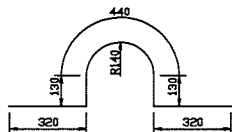
③ 3 - D10 x 1065



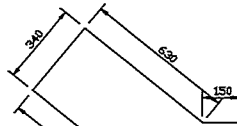
⑨ 9 - D10 x 750



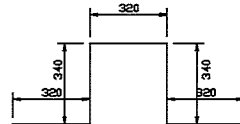
① 1 - D10 x 1160



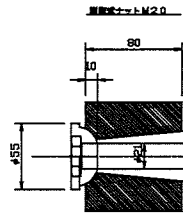
② 2 - D13 x 1340



① 1 - D10 x 1900

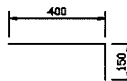


④ 4 - D10 x 1640



S=12

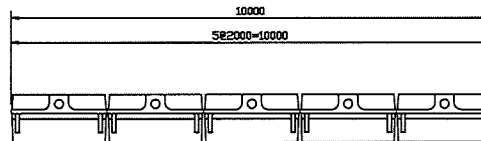
注 数量 S=100



② 2 - D10 x 550



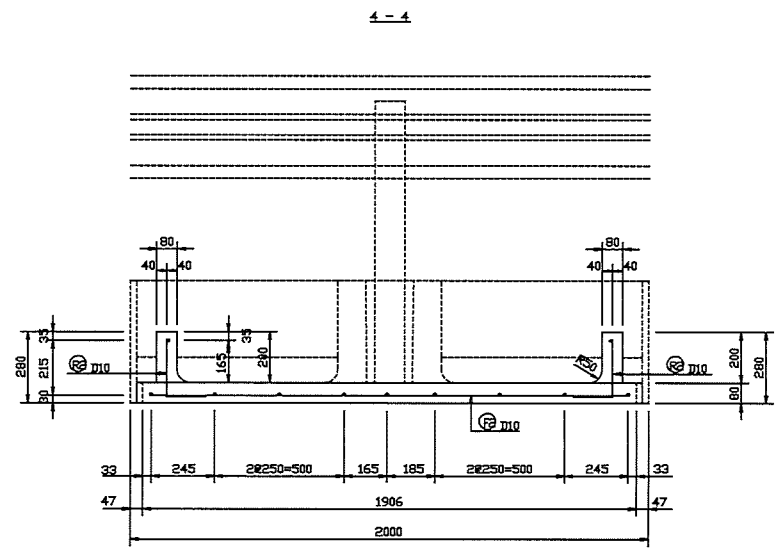
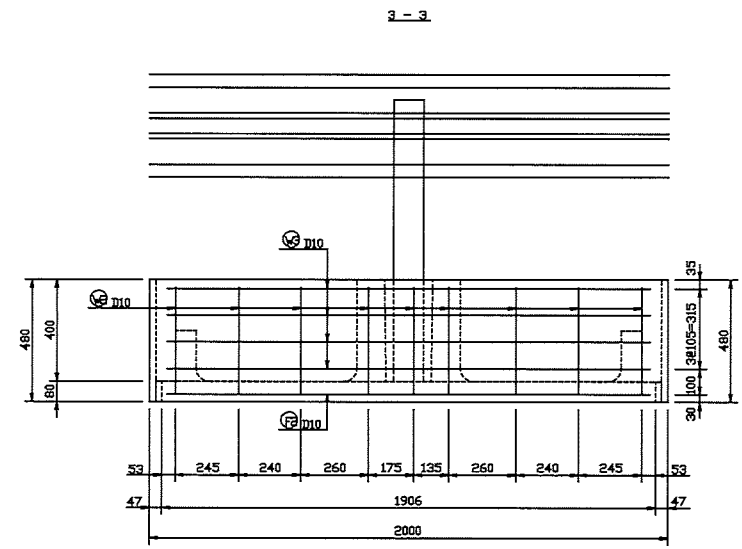
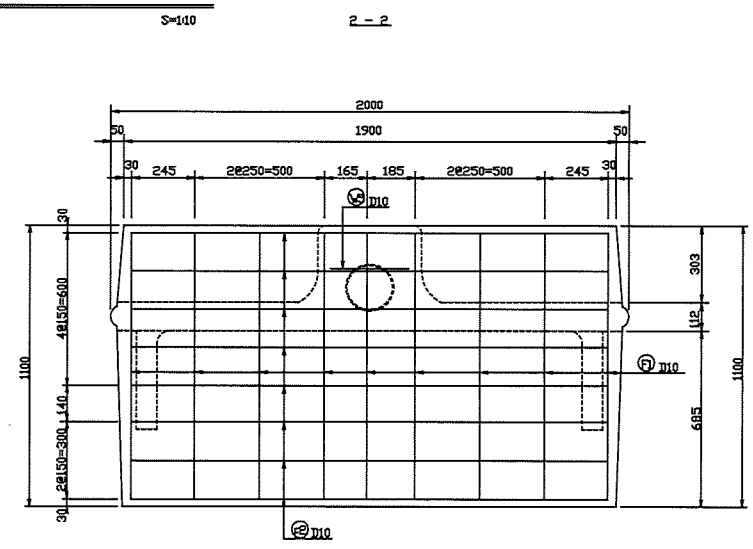
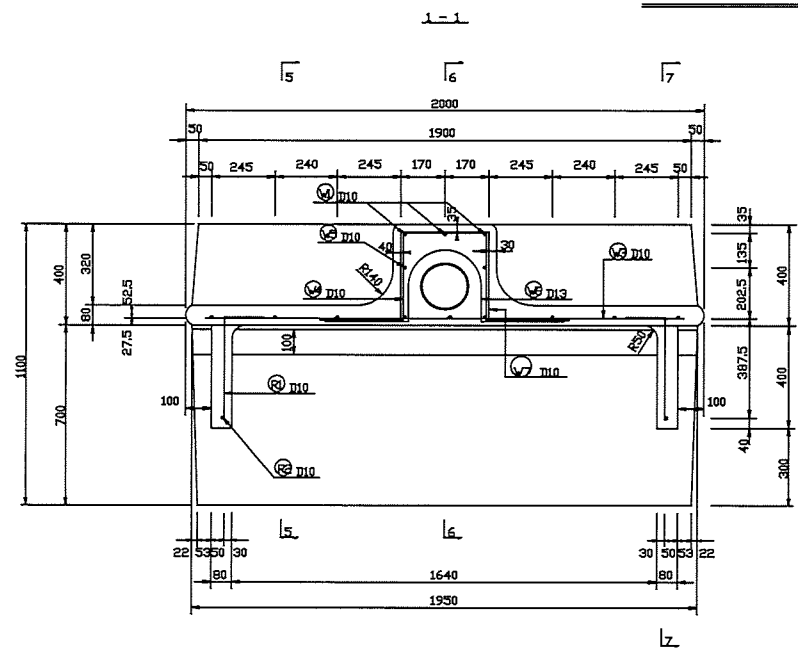
② 2 - D10 x 370



鉄筋量表 (SD295)

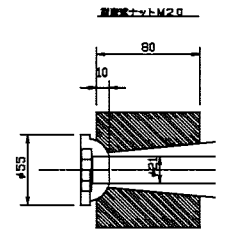
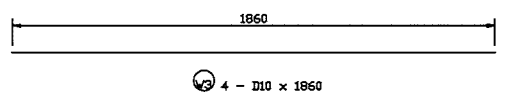
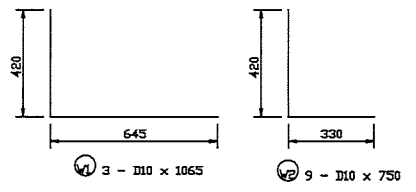
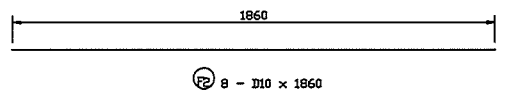
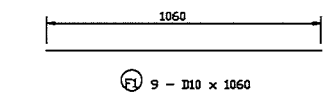
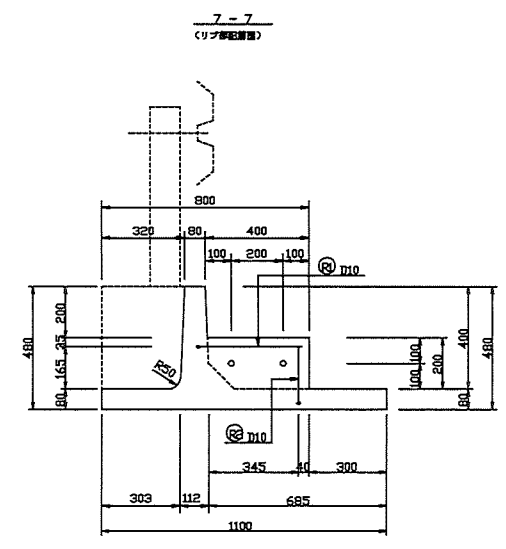
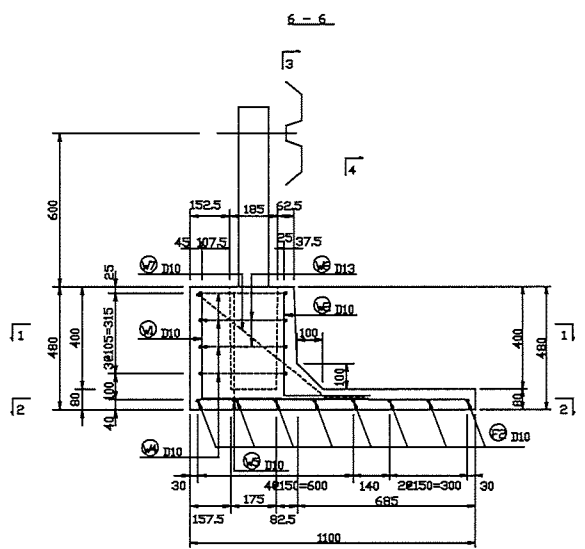
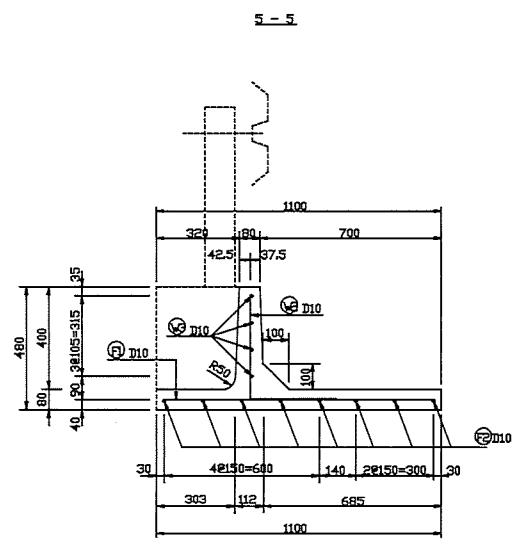
種別	径	長さ	本数	単位重量	一本重量	実量	単位
F 1	D10	960	9	0.58	0.54	5	—
F 2	D10	1860	8	0.58	1.04	8	—
13							
R 1	D10	550	2	0.58	0.31	1	└
R 2	D10	370	2	0.58	0.21	1	L
2							
V 1	D10	1065	3	0.58	0.60	2	└
V 2	D10	750	9	0.58	0.42	4	└
V 3	D10	1860	4	0.58	1.04	4	└
V 4	D10	1840	4	0.58	0.92	4	└
V 5	D10	1160	1	0.58	0.65	1	└
V 6	D13	1340	2	0.985	1.33	3	└
V 7	D10	1900	1	0.58	1.08	1	└
13							
合 計 D13				3 ks			
D10				31 ks			
計 鉄 筋				34 ks			

プレキャストガードレール基礎配筋図(その1) PG II

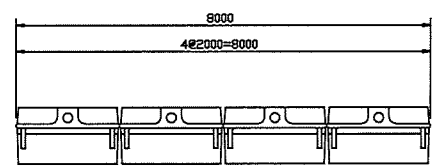
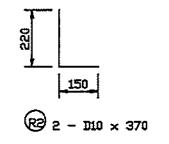
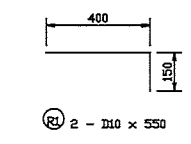
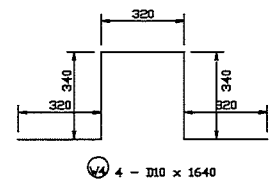
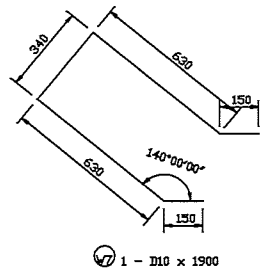
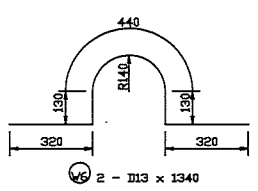
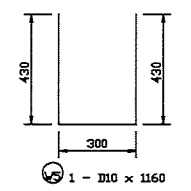


プレキャストガードレール基礎配筋図(その2) PG II

S=100



S=12



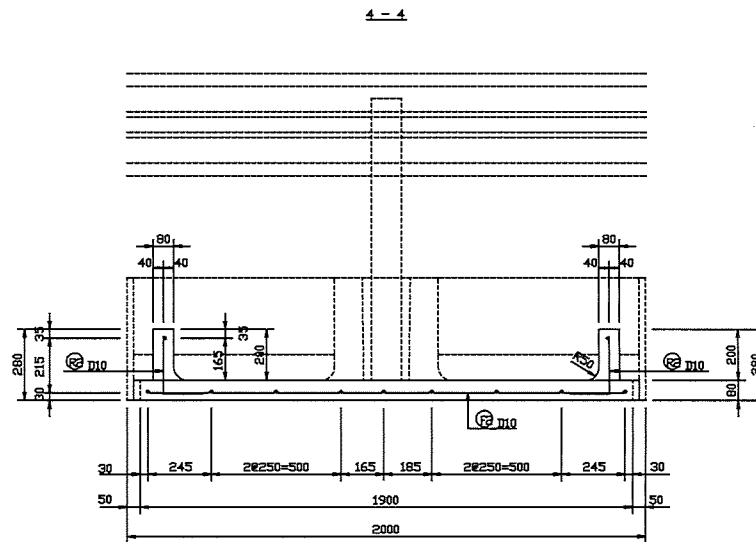
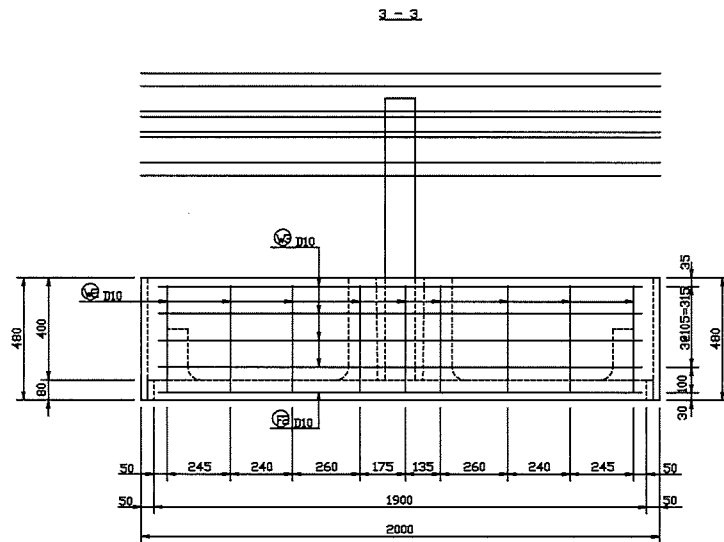
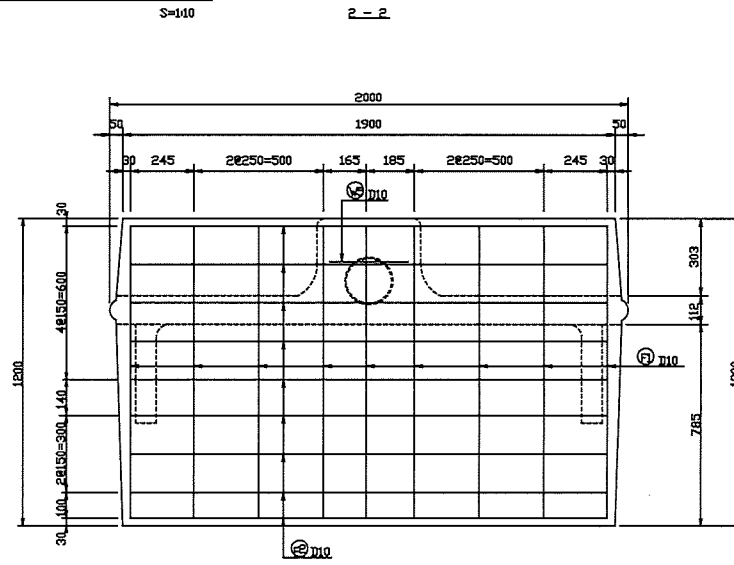
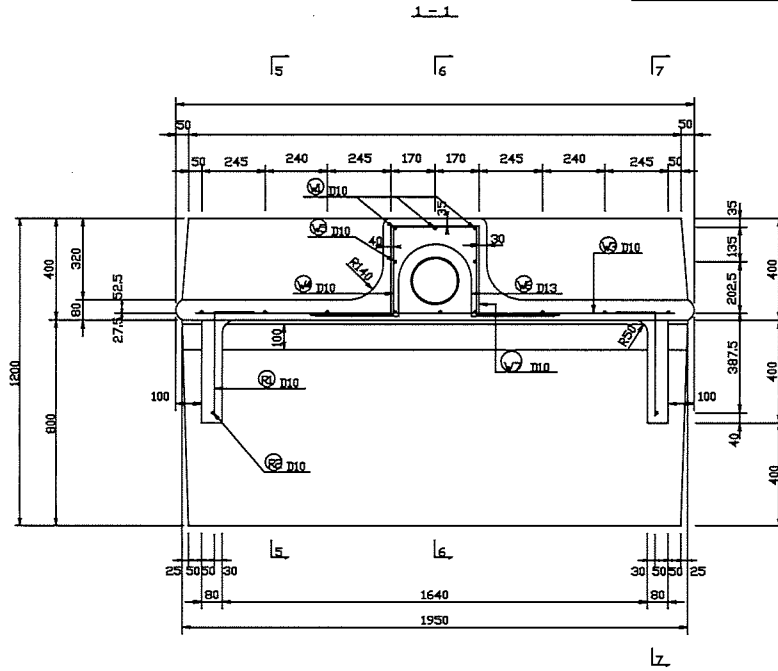
全長 8000 S=150

鉄筋質量表 (SD295)

種別	径	長さ	本数	見合質量	一本見合質量	質量	形状
F 1	D10	1060	8	0.58	0.58	5	—
F 2	D10	1860	8	0.58	1.04	5	—
13							
R 1	D10	850	2	0.58	0.31	1	┌
R 2	D10	370	2	0.58	0.21	1	L
2							
V 1	D10	1065	3	0.58	0.80	2	L
V 2	D10	750	8	0.58	0.42	4	L
V 3	D10	1860	4	0.58	1.04	4	—
V 4	D10	1640	4	0.58	0.92	4	┌
V 5	D10	1160	1	0.58	0.88	1	┌
V 6	D13	1340	2	0.885	1.38	3	┌
V 7	D10	1900	1	0.58	1.06	1	┌
19							
合計 D13							3t
D10							31t
総質量							34t

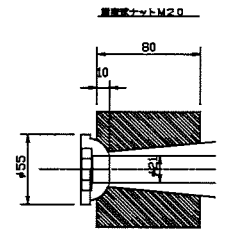
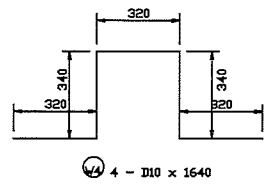
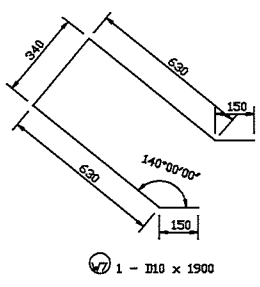
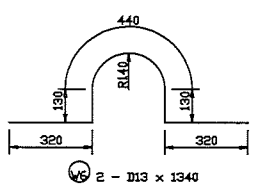
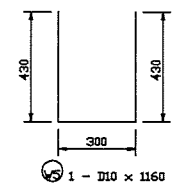
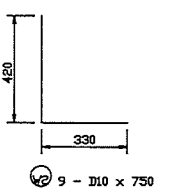
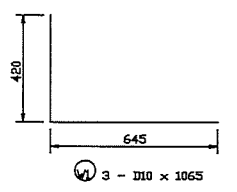
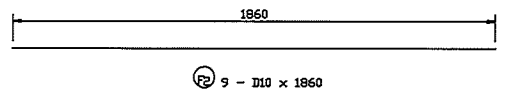
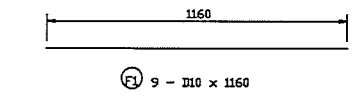
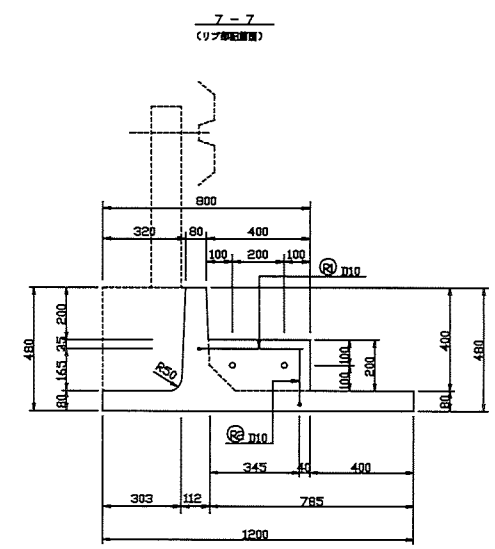
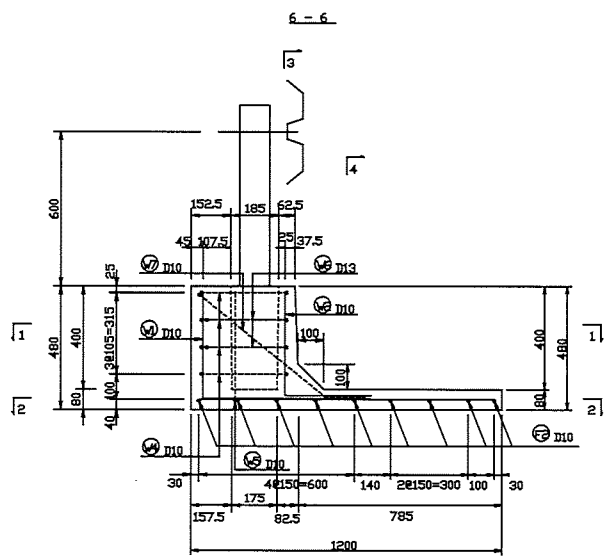
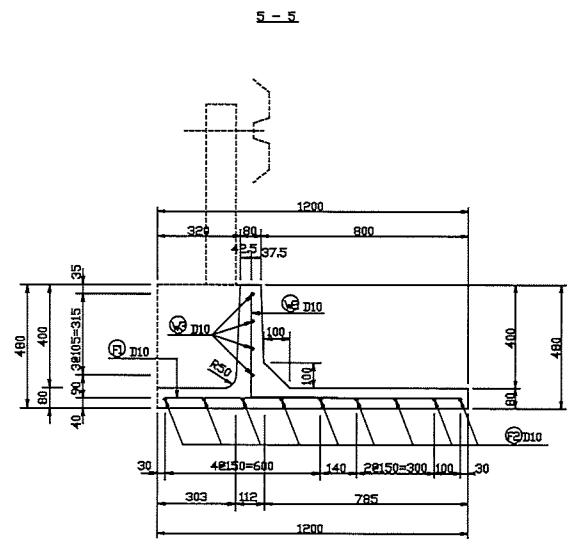


プレキャストガードレール基礎配筋図(その1) PG II



プレキャストガードレール基礎配筋図 (その2) PG II

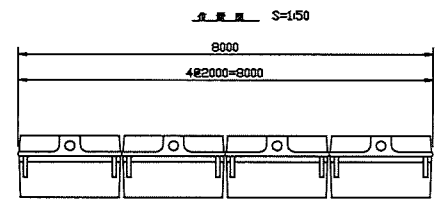
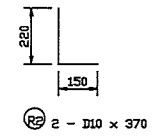
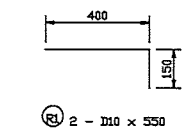
S=110



S=12

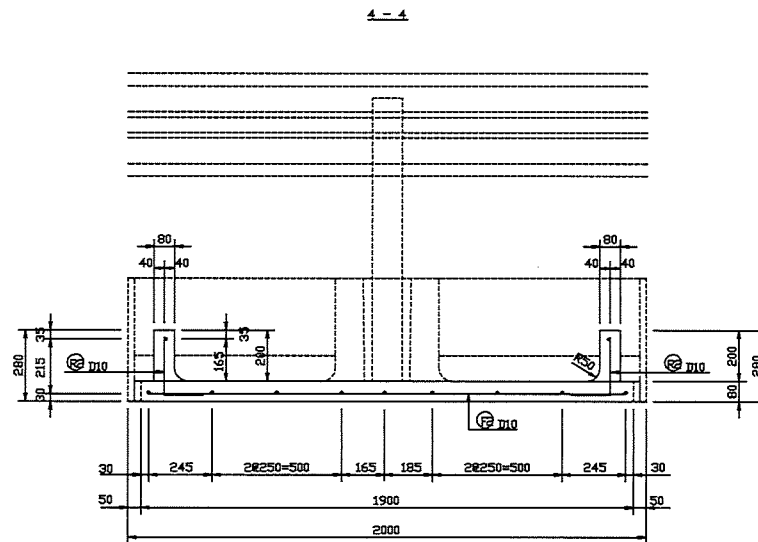
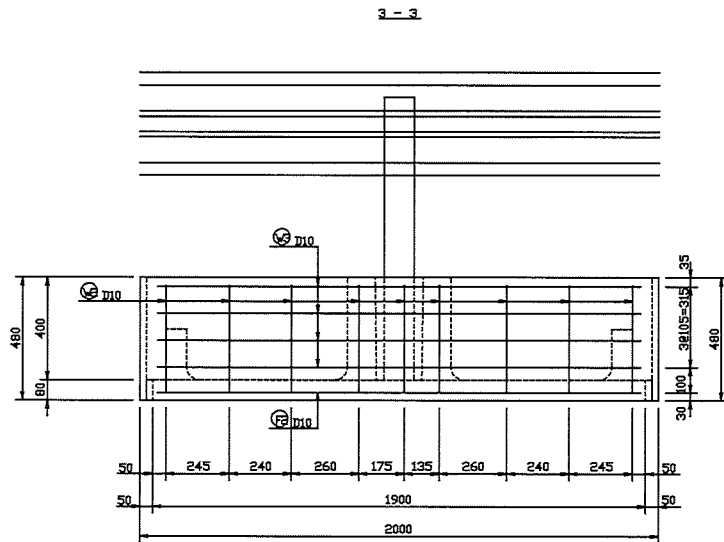
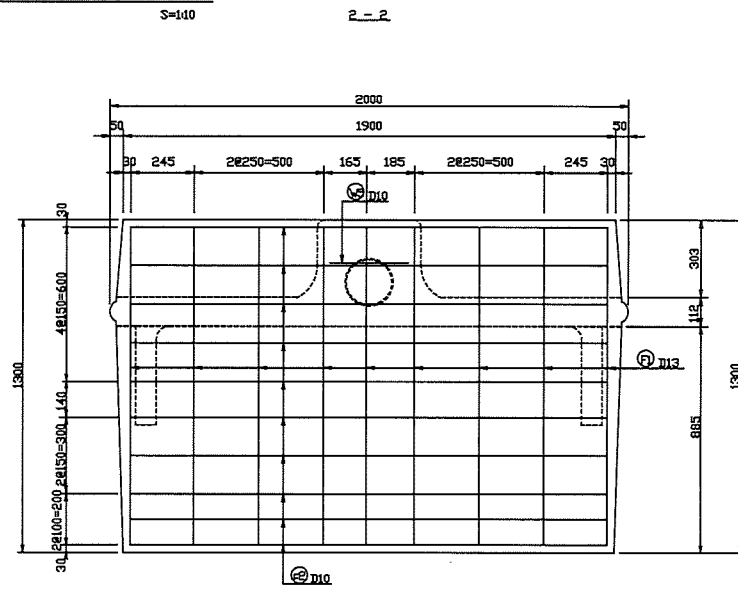
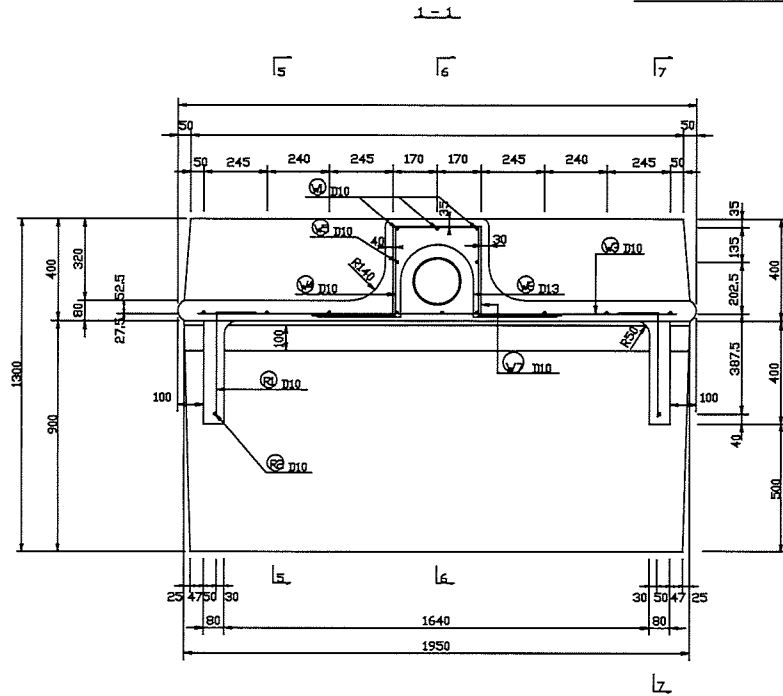
鉄筋質量表 (SD295)

筋種	径	長さ	本数	単位質量	必要質量	質量	質量
F 1	D10	1160	9	0.58	0.85	8	—
F 2	D10	1860	9	0.58	1.04	8	—
18							
R 1	D10	650	2	0.58	0.31	1	┌
R 2	D10	370	2	0.58	0.21	1	L
2							
V 1	D10	1065	3	0.58	0.60	2	L
V 2	D10	750	9	0.58	0.42	4	L
V 3	D10	1860	4	0.58	1.04	4	L
V 4	D10	1640	4	0.58	0.92	4	L
V 5	D10	1160	1	0.58	0.65	1	L
V 6	D13	1340	2	0.985	1.39	3	L
V 7	D10	1900	1	0.58	1.05	1	L
18							
合計 D13				9	kg		
D10				39	kg		
総質量				58	kg		

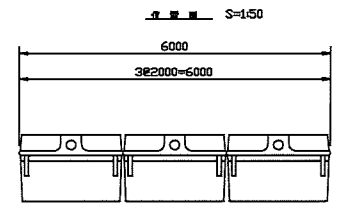
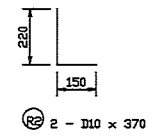
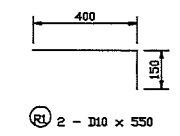
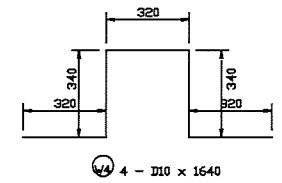
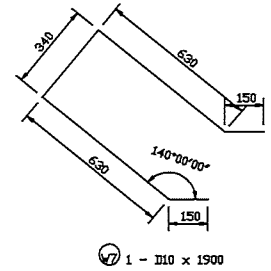
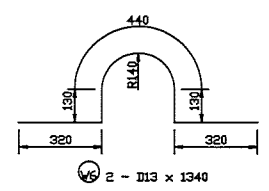
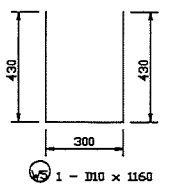
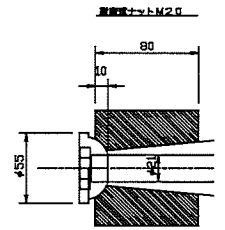
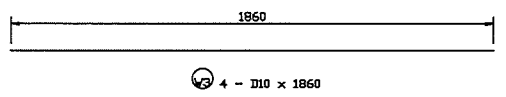
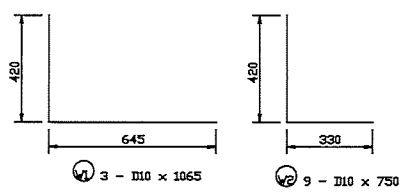
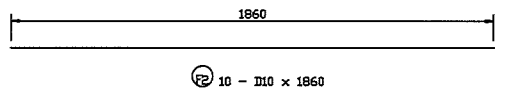
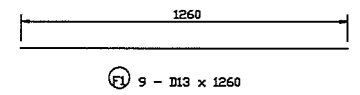
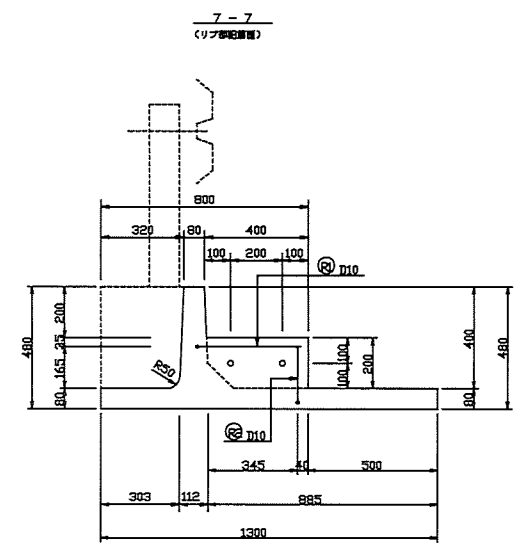
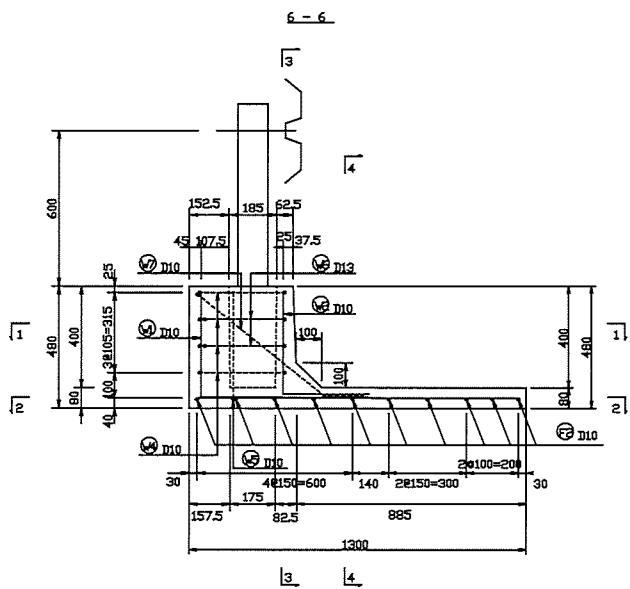
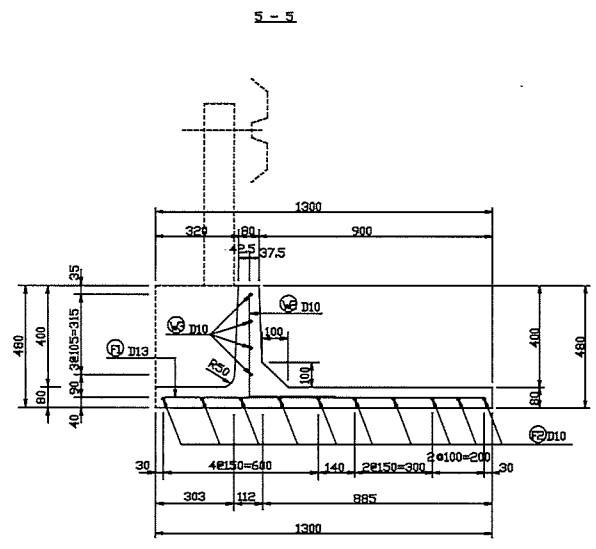


全長 8000 S=150

プレキャストガードレール基礎配筋図(その1) PG II



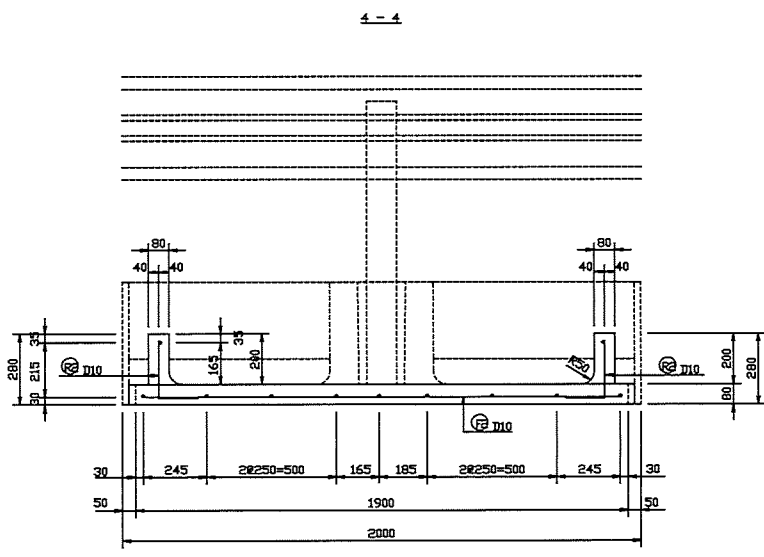
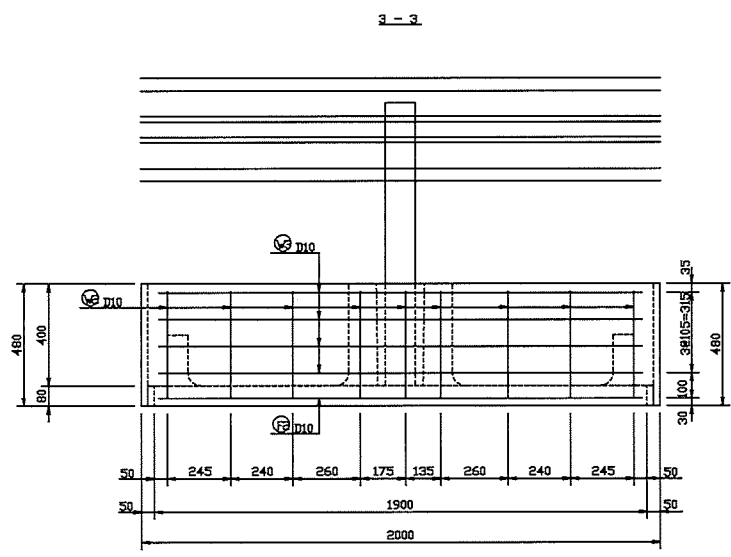
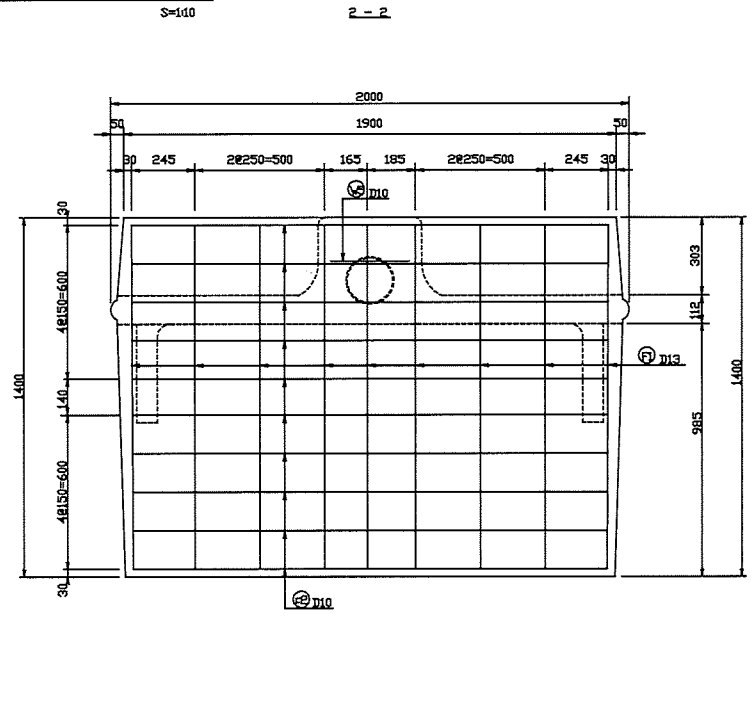
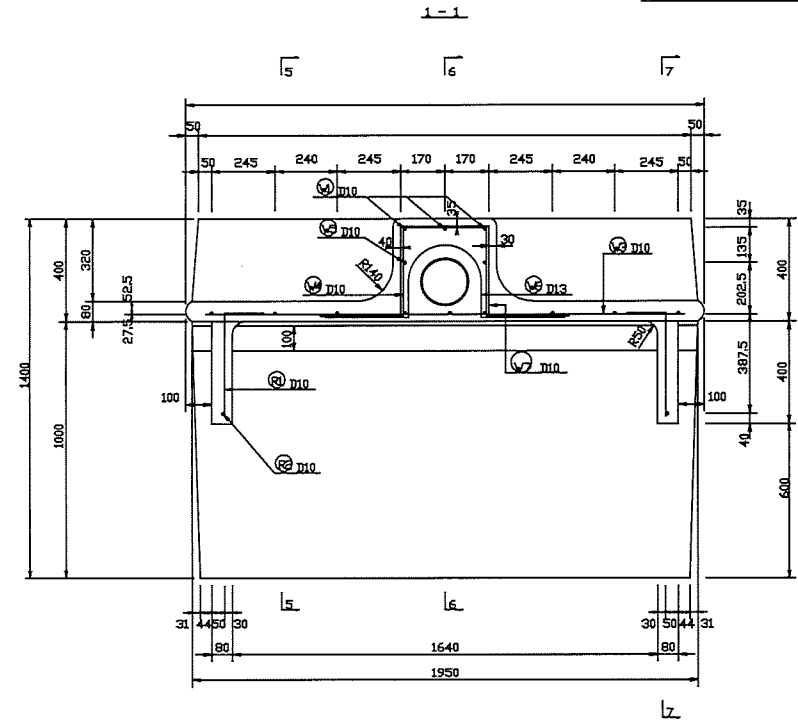
プレキャストガードレール基礎配筋図 (その2) PG II  
S=140



鉄筋質量表 (SD295)

種別	径	長さ	本数	見付質量	一次算出質量	質量	備考
F 1	D13	1260	8	0.895	1.28	11	—
F 2	D10	1860	10	0.58	1.04	10	—
							21
R 1	D10	550	2	0.58	0.31	1	┌
R 2	D10	370	2	0.58	0.21	1	L
							2
V 1	D10	1085	3	0.58	0.80	2	L
V 2	D10	750	9	0.58	0.42	4	L
V 3	D10	1680	4	0.58	1.04	4	—
V 4	D10	1840	4	0.58	0.92	4	┌
V 5	D10	1180	1	0.58	0.65	1	┌
V 6	D13	1340	2	0.995	1.33	3	—
V 7	D10	1900	1	0.58	1.05	1	┌
							19
合計 D13				14本			
D10				28本			
総質量						42kg	

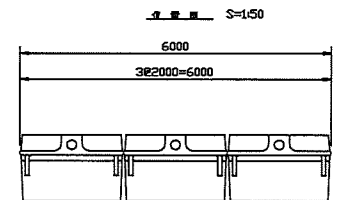
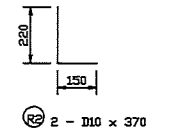
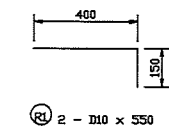
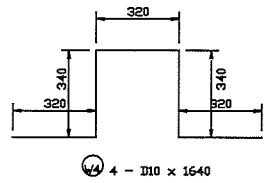
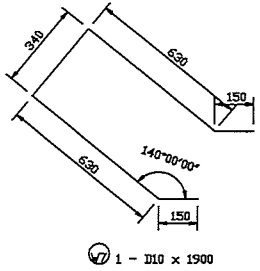
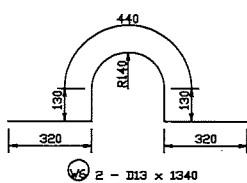
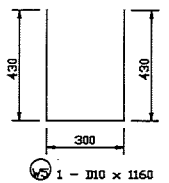
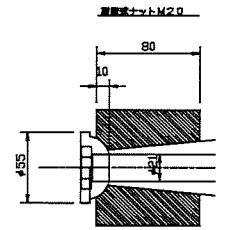
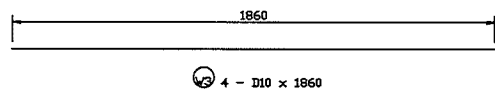
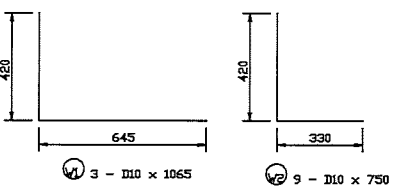
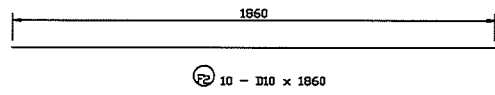
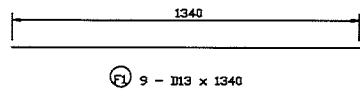
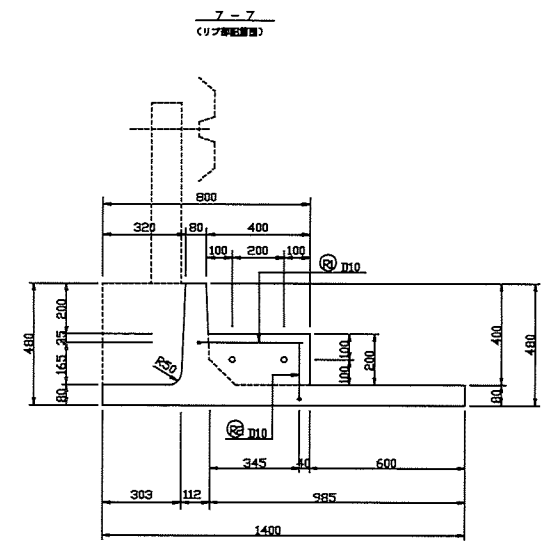
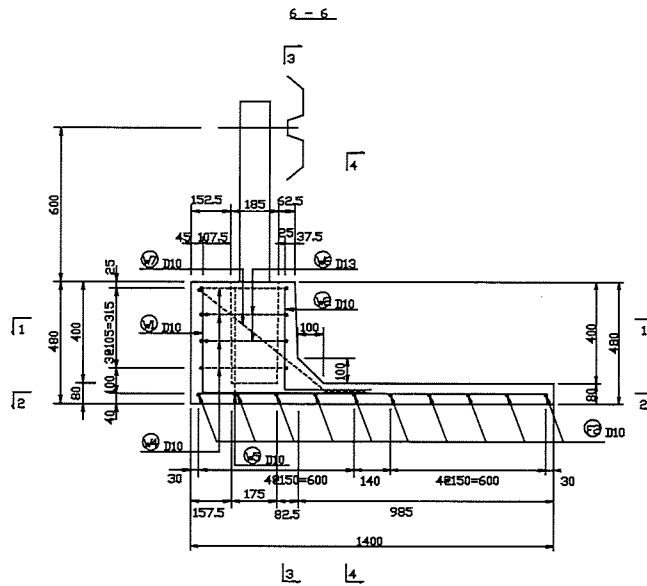
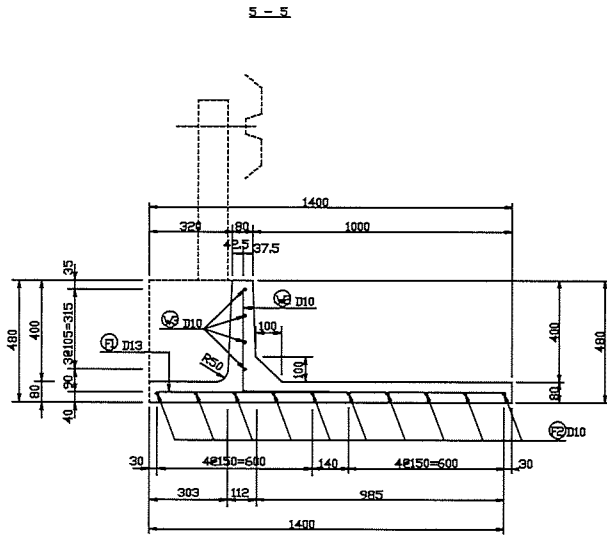
プレキャストガードレール基礎配筋図(その1) PG II



製品番号	BC-1400
------	---------

プレキャストガードレール基礎配筋図(その2) PG II

S=140



鉄筋質量表 (SD295)

筋種	径	長さ	本数	見付質量	一本見付質量	質量	備考
F 1	D13	1340	8	0.985	1.33	12	—
F 2	D10	1860	10	0.56	1.04	10	—
22							
R 1	D10	550	2	0.56	0.31	1	└
R 2	D10	370	2	0.56	0.21	1	L
2							
V 1	D10	1085	3	0.56	0.60	2	L
V 2	D10	750	2	0.56	0.42	4	L
V 3	D10	1860	4	0.56	1.04	4	—
V 4	D10	1640	4	0.56	0.82	4	└
V 5	D10	1180	1	0.56	0.65	1	└
V 6	D13	1340	2	0.925	1.33	3	└
V 7	D10	1900	1	0.56	1.05	1	└
19							
合計 D13				15ks			
D10				28ks			
総質量				43ks			